

# SYNERGIFIC SOLUTIONS

# PRE-QUALIFICATION DOCUMENTS



COMPANY  
**PROFILE**



**Since 2014**



Synergific Solutions, established in 2014, is a leading systems integrator of high-end MEP, Electrical, Low Current, Information Technology & Digital Signage Systems. We are a Professional Engineering company that has the capability to design, install and Commission any system we deal with.

Built on an outstanding reputation, Synergific understands that excellence is built overtime and longevity. We are determined and committed to growth and excellence taking this into the next decades.

Synergific is a combination of management oriented and dedicated professionals, all Committed to high quality services with proven performance.

# OUR PRESENCE



# OUR CLIENTS



# OUR CLIENTS



# OUR CLIENTS



## MEP CONTRACTING

COMMERCIAL PROJECTS FOR AIRPORTS, DATA CENTERS, WAREHOUSES, HOSPITALS, STADIUMS, MOSQUES, METRO-STATIONS, MALLS, SCHOOLS ETC.

Turnkey services for MEP works including Detailed Engineering, Value Engineering, Project management, Procurement, Installation, Testing, Balancing, Commissioning, Operation, and Maintenance.

### SERVICES INCLUDES

- ✗ Heating, Ventilation & Air Conditioning (HVAC)
- ✗ Large-scale central air conditioning utility plants
- ✗ Sanitary engineering
- ✗ Fire protection (Firefighting, Detection, Alarm, and Extinguishing)
- ✗ Building electric power and lighting
- ✗ Buildings low current systems (Telephone, data, public address, security, building management system and others).
- ✗ Small-scale water desalination and sewage treatment plants installation
- ✗ Irrigation system
- ✗ Renovation/upgrading of MEP works



## SPECIALIZED ELECTRICAL SERVICES

- ✘ Main panel boards / switchboards
- ✘ Sub-main panel boards
- ✘ Final distribution boards
- ✘ Synchronizing panel
- ✘ Automatic transfer switch (ats)
- ✘ Manual transfer switch (mts)
- ✘ Power factor correction panel (apfc) lighting control cabinets
- ✘ Indoor and outdoor lighting including special lighting system
- ✘ Grounding and lightning protection. Installation of earth pits, earth cables and related works
- ✘ HVAC electrical and control system
- ✘ Motor / pump control panels
- ✘ Bms / ddc control cabinets (hvac control systems)
- ✘ Fire alarm systems, cctv, access control system,
- ✘ Structured, cabling system, cctv system, smatv system, catv system, matv system, ip tv system, audio / video intercom system.
- ✘ Installation of smoke detectors, manual call points, sounders, Speaker, modules, emergency lights, exit lights. Installation Of repeater panels, mimic panel.
- ✘ Installation of emergency lighting monitoring panels, flood lighting.
- ✘ Gate barrier system, door access control system.
- ✘ Medical nurse call system, patient station, bed head unit, bathroom/ toilet pull cord, digital signage, video walls,
- ✘ Motor control centers, load center cabinets, variable speed drives cabinets PLC and industrial control panels, relay protection, control, and power automation
- ✘ Installation of distribution transformer, package units.



## SPECIALIZED ELECTRICAL SERVICES

- ✗ Installation of BMS (building management systems).
- ✗ Installation of cable management system.
- ✗ Installation of street light poles with fittings and related cabling works.
- ✗ Installation of LV motors, LV generators, solar panels and related works.
- ✗ Installation of battery charger panel, battery bank and ups system.
- ✗ Laying, jointing & termination of HV and MV cables.
- ✗ Cable laying, termination & splicing of LV power and control, ELV systems, fiber optic cables and bms systems. Glanding & termination of LV & control cables.
- ✗ Installation of instrumentation accessories and tubing works, process control and instrumentation
- ✗ Retrofit of HV & LV electrical panels. Retrofit/ modification job for various types of switchgear and protection relays
- ✗ Installation of modules and interfacing with third party system.
- ✗ Installation of suppression system control panels and accessories.
- ✗ Loop checking and circuit terminations.
- ✗ Programming and interfacing
- ✗ Labelling and identification
- ✗ Testing and commissioning

## POWER SUBSTATIONS

- ✗ Packaged unit installation, high voltage cable Installation services, cable pulling ladder rack installation.
- ✗ Containment, cable tray installation, open trench cable installation, terminations, cable dressing etc..
- ✗ HV & MV transformers, switch gears, motors, protection systems,



## HAZARDOUS AREA ELECTRIFICATION

- ✘ Installation and termination of explosion-proof junction box & control equipment for hazardous areas, junction & instrumentation box aluminum (ex d) cs, conduit & terminal box (ex d) gua, earthing control system (zone 1 and 2) gub, earthing Control system (zone 1 and 2) ejb.
- ✘ Fluorescent linear (zone 1) lfe/lfee, floodlight (zone 1) flde, fluorescent linear (zone 2) lfn.
- ✘ Cable glands armored (zone 1 and 2) cga, cable glands unarmored for rigid & flexible conduits (zone 1 and 2) cgf, ex 'd' metal plugs, adaptors & reducers for conduits, polyamide cable glands & plugs, ex 'de' plug & socket for zone 1,
- ✘ Self-regulating heating cables, high temperature power limiting heating cables, constant wattage polymer insulated cables
- ✘ Sensing, monitoring & control device, thermostat (hazardous area), end seal kits, splice kits, insulation entry kits, connection kit, mounting and support brackets, pipe straps, gt-66, gs-54, at-180 – fixing tapes, glass and aluminum type.
- ✘ Aluminum mcb unit, aluminum short mcb unit ss mcb unit, mccb unit.

## FIRE DETECTION SYSTEMS

- ✘ Fas-420, bosch aspiration smoke detection systems
- ✘ Aspiration gas detection systems
- ✘ Toxic gas sense detection systems
- ✘ Combustible gas sense detection system
- ✘ Xtralis- vesda systems, faast flex, osid (open area smoke imaging detection), x-as air sampling, icam – paib (point in a box).



## EXPLOSION DETECTION SYSTEMS

- ✘ Annunciator Module (AM): command/communication central console
- ✘ Relay Card (RC8): relays for process equipment interface, allowing the system to discriminate between critical and non-critical trouble conditions
- ✘ Power Supply Unit (PSU): uninterruptible power supply for added safety and complete reliability
- ✘ Ceramic/Optical Detector: detection that is virtually invulnerable to damage and false activation
- ✘ Explosion Protection Controller (EPC): offers multiple hazard protection

## FIRE FIGHTING SYSTEMS

- ✘ PROINERT Inert gas IG-55, IG-541, IG-100 or IG-01.
- ✘ IG-55 Fire Suppression System: 5N<sub>2</sub> 5Ar
- ✘ IG-541 Fire Suppression System: 5N<sub>2</sub> 4Ar 1CO<sub>2</sub>
- ✘ IG-100 Fire Suppression System: 1N<sub>2</sub> 100 percent
- ✘ IG-01 Fire Suppression System: 1Ar 100 percent
- ✘ 3M NOVEC 1230 Fire protection fluid
- ✘ FM-200 Clean agent fire suppression system
- ✘ ECARO-25 Clean agent fire suppression system
- ✘ Co<sub>2</sub> fire suppression systems

## FIKE – EXPLOSION SUPPRESSION SYSTEM VENTS AND PASSIVE ISOLATION

- ✘ Chemical Explosion Isolation
- ✘ EIV/FAV Explosion Isolation Valve
- ✘ Composite explosion vents
- ✘ Flame detection
- ✘ EIPV Explosion Isolation Pinch Valve
- ✘ DFI Dual Flap Isolation Valves



## WASTE MANAGEMENT SYSTEMS

- ✘ Huge heavy mining exploration and industrial factory incinerators capacities of 2 tons per hour.
- ✘ Medical waste incinerators installation and erection up-to 800kgs per hour.
- ✘ Agricultural waste incinerators installation and erection up-to 900 kgs per hour.
- ✘ Refugees camp incinerators skid type for temporary disaster sites is usually considered as MSW (municipal solid waste) disease, viruses and infections such as Ebola
- ✘ Pet crematory incinerators portable type of 100 kgs per hour and pet remains cremulator.

## LAUNDRY EQUIPMENT

- ✘ Industrial laundries equipment installation and erection for 110 kgs per hour
- ✘ Medium and high spin hard mount washers, wet cleaning washer extractor, medical barrier washer extractor, heavy duty heat pump tumbler dryer, ironing and sheet, towel folders rollers. Steam vacuum, air operated laundry press, dry cleaning scissors, presses etc...,

## WAREHOUSE MANAGEMENT MATERIAL HANDLING SYSTEMS

- ✘ Installation and Erection of composite and complicated automated material placing and handling systems
- ✘ Shuttle system for stocking/de-stocking medium weight load
- ✘ Pick station: picking, inventory, exclusion, restocking
- ✘ Buffer sequencer sequence expected by a preparation station or palletization robot
- ✘ Conveyor system: Conveying, sorting, accumulating, distributing, and grouping containers and packages
- ✘ Packing machines, automated pallet storage and racking systems.
- ✘ Item picking robots, pick and drop, pick and place

## PORTS & TERMINALS INDUSTRIAL MATERIAL HANDLING SYSTEMS

- ✘ Installation and terminations of ports and terminals lighting systems, cargo area lighting, crane lighting, harbor terrain & crane lighting, dynamic terrain lighting, etc.,
- ✘ Installation, erection, operations of ship to shore (STS) crane, a quay crane (QC), rail-mounted gantry crane (RMG), a rubber-tyred gantry crane (RTG) & automated stacking crane (ASC)
- ✘ Installation and erection of various silos, bucket elevators, sorting conveyors, stacking, reclaiming, ship loading.
- ✘ Blending beds, ship loaders, pipe conveyors, overland conveyors, stockpile conveyors, grasshopper conveyors,
- ✘ Luffing and sleeving stacker, reclaimers, apron feeder, stacking conveyor, side reclaimer, luffing stacker, bridge bucket wheel, double boom stacker, portal reclaimer.

## ELEVATORS AND ESCALATORS

- ✘ Erection and installation of various elevators and escalators for hospitals, metro stations, airports etc.
- ✘ Specialty spiral escalators and man walks/ moving walks hydraulic elevators, destination oriented allocation system (DOAS).
- ✘ Inclined and straight auto-walks, hospital bed elevators, freight elevator, dumbwaiter lift, etc.,
- ✘ Specialty lifts for staircase rail lifts: standing and seated 1-person, narrow stair disabled person stair lift, stainless steel pool lifts,



## AIRPORT & HELIPORT SYSTEMS

- ✘ Installation and erection for ALCMS – Airport lighting control and monitoring system
- ✘ CCR-Constant current regulator terminations, Series Circuit Cut-Out Switch installations, Transformer mains supply (electronic), TMSE's., MULTIWAY CIRCUIT SELECTOR SWITCH, CABLE TERMINATION PANEL (CTP), IRMS-Insulation resistance Monitoring System, Low Voltage Distribution Switchboard.
- ✘ Bollard Lighting, Heliport Flood Lighting. FATO-Final Approach and Take-Off, HRB – Head Rotating Beacon Area Lighting, TLOF-Touch Down and Lift-Off Area Lighting, Approach Lights, Medium and High intensity Obstacle lights, WDI - Internally illuminated wind direction indicator
- ✘ REIL Runway End Identifier Lights, PAPI Precision Approach Path Indicator, VASI Visual Approach Slope Indicator lighting
- ✘ TCL Taxiway Centerline Light – LED, HIRL High Intensity Runway Edge Lights - LED
- ✘ Inset Approach Side-row Barrette, Inset Approach Centerline & Crossbar, Inset Runway Approach Light, Inset touch down zone lighting. Inset Taxiway Edge, Apron Edge.
- ✘ Inset Taxiway Centerline & Stop-bar, Apron Maneuvering Light
- ✘ Clearway - Taxiway Guidance Signs, IRDM- Illuminated Runway Distance Markers
- ✘ BDS- Bird Deterrent System, TT- Tiedown Tether
- ✘ Installation and Erections of baggage Handling System (BHS)
- ✘ CRISBAG independent carrier system, self-bag drop
- ✘ AUTOVER Independent carrier system
- ✘ TILT-TRAY LOOP SORTATION SYSTEM
- ✘ CRISBELT conveyor system.
- ✘ CRISCLAIM Baggage carousels
- ✘ SECURITY SCREENING: baggage handling system with Explosives Detection Systems (EDS), Hold Baggage Screening (HBS) solutions
- ✘ CRISCHECK Check in conveyors
- ✘ Friction- or motor-driven roller decks
- ✘ Roller ball or castor mats
- ✘ Weighing scales
- ✘ Protection barriers

## TRUCK WEIGHING SYSTEMS

- ✘ Installation of Industrial weighing equipment for transportation systems, both static and dynamic systems, calibration and installation of platform and measurement sensors/load cells with weighing indicators.
- ✘ Erection of Heavy duty off-road capability weigh bridges for mining trucks etc..

## METRO RAIL STATION SPECIALITY INSTALLATION

- ✘ PSD: Installation of platform screed/screen door
- ✘ COP: crew operation panel, MCP: manual control panel
- ✘ SSOP: station staff operation panel, MDOP: manual door opening panel
- ✘ HS: Hindrance sensor.

## TUNNELS – METRO, ROAD, RAIL, WATER, UTILITY

- ✘ Installation and erection of Tunnel ventilation systems
- ✘ Electrical power supply and distribution, Tunnel lighting and waymarking systems
- ✘ Pumped drainage systems, Fire safety engineering, Traffic monitoring, control and information systems.
- ✘ Audio communications, Plant monitoring and control, Associated shafts, buildings and plant rooms

## INDUSTRIAL WASTE WATER TREATMENT

- ✘ Installation and erection of Odor Control, Primary lamella Separator and API separators.
- ✘ Biological Treatment: Extended Aeration by Fines Bubbles Diffusion for nitrification / de-nitrification, Dissolved Air Flotation Clarifiers - DAF's,
- ✘ Physical Chemical Treatment: Fenton Reaction Clarifier Tanks, Chemical Injection Systems
- ✘ Multi Media Filters, GAC Filters and Chlorination System.
- ✘ Associated piping systems and pumps

## SPECIALIZED MECHANICAL SERVICES

- ✘ Pressure testing for water supply pipes
- ✘ Installation of sprinkler pipes, zone control valve, wet riser pipes, sprinkler heads, breeching inlets, fire extinguisher, fire hose reel cabinets, prvs, isolation valve...etc.
- ✘ Installation of landing valves & fire hose reels
- ✘ Installation of suppression system (clean agent system, deluge system, pre - action system... Etc.)
- ✘ Installation of fire pump rooms including all networks, valves, accessories, control panel, alarm check valves, nrvs...etc.
- ✘ Installation of modules and interfacing with third Party system.
- ✘ Installation of suppression system control panels and accessories. labelling and identification
- ✘ Testing and commissioning

## HVAC-R

- ✘ Data center crac units, crah units, row cool units, free-cooling units, compact cooling units, close control Cooling systems, make-up units (mah), sensitive spot Cooling units, demand-responsive ventilation systems Fan wall units,





Metso:Outotec



ENGINEERING TOMORROW



FAM





# INDUSTRIAL STANDBY GENERATOR INSTALLATION

- ✘ Permanente Enclosed Generator – Outdoor installation of a canopy generator system installation to include, setting and connecting generator and auxiliary fuel system
- ✘ Generator Located Inside Factory – Indoor installation of a generator system on a skid. Installation to include setting generator and connection of auxiliary systems.
- ✘ Portable enclosed generator – Basic inspection/setup and power system installation diagrams.
- ✘ Connect generator set to lifting device and crane. Move and align generator set with concrete mounting studs. Install attaching hardware (washer, lock washer, nut).
- ✘ Connect generator output to Automatic Transfer Switch (ATS).
- ✘ Locate fuel tank, align with mounting studs, set and install washers and nuts.
- ✘ Install fuel pump and filter assembly onto tank. Install retractable hose reel and connect to fuel pump.
- ✘ Exhaust systems – Mufflers and exhaust pipes insulation and routing to
- ✘ Cooling air – Louvers controlled by generator control system installing Ductwork connection to generator radiator/after cooler.

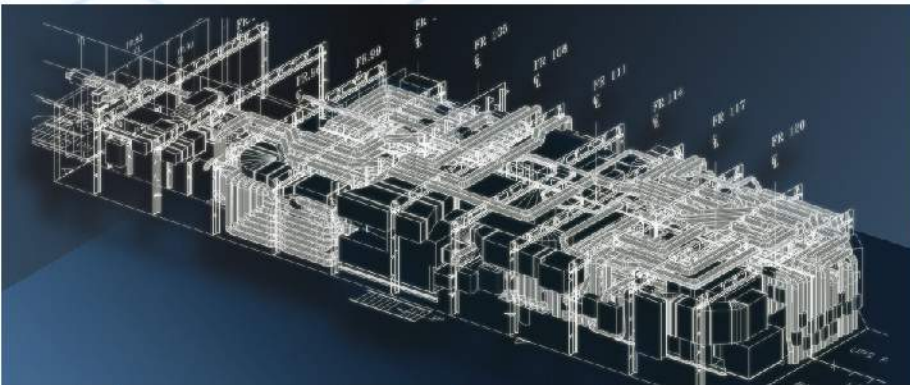


Schneider  
Electric

Johnson  
Controls

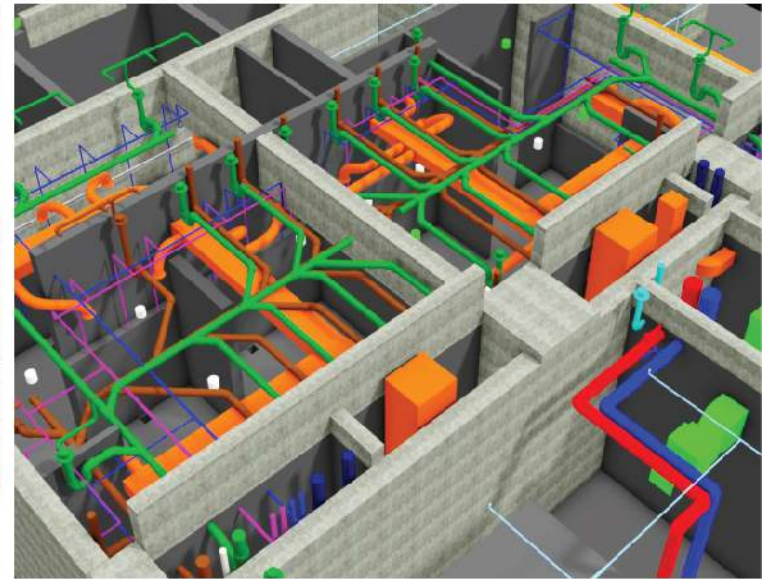
CRESTRON

Honeywell



# MEP

● Mechanical ● Electrical ● Plumbing



MINING & MINERAL  
PROCESSING  
OIL & GAS  
HYDROCARBONS  
CHEMICAL  
FERTILIZERS  
POWER  
GENERATION



✘ Basic Engineering: As-built, planning, scheduling

✘ Detailed Engineering:

✘ Civil & Structural Engineering

✘ Piping & Tanks

✘ Rotary & Static Equipment

✘ Electrical & Instrumentation

✘ Project Management Consultancy PMC Site services all types of Industrial projects, design & technical review, scoping & concept studies

✘ Commissioning Services: Site services for all types of industrial plants Pre safety start review, snagging, punch-listing, closures of activities

✘ Construction Management: Site Services for all kind of industrial construction, installation & erection activities.

✘ Shutdown & turnaround:

✘ Plant Relocation Projects

✘ Modernization and Capacity Expansion Projects

✘ Composite MEP Packages

✘ Relocation & Revamp



## SPECIALIZED MECHANICAL SERVICES

- ✘ Medical Gas compacted oxygen system, Skid type, containerized, medical gas piping for oxygen, compressed air systems and components.
- ✘ Steam, superheated water, hot water pipelines, Sanitary installations, plumbing, domestic and waste water installations
- ✘ HVAC systems HVAC Ducting works, Sound Attenuation, Chilled Water Pipe
- ✘ Exhaust Fans, Chillers, AHU's, FCU's, FAHU's, Package Units, Installation of all ducted Split Units, Installation of VRF System, Valve Package for AHU's, Chillers,
- ✘ FCU's & Pumps, Refrigerant Piping Works, Air Terminals Installation, Thermostat and Controllers, Air Balancing
- ✘ Chemical Dosing Unit / Pressurization Units
- ✘ Installation of VCD/FD/NRD/Split Dampers
- ✘ Aluminum Cladding Works (Pipe & Duct)
- ✘ CHW Pipe Pressure Testing
- ✘ Clean rooms and hospital hygienic systems
- ✘ HEPA filters and laminar flow units
- ✘ Installation of Acoustic Pipes, Fittings & Acoustic Lagging
- ✘ Installation of all types of traps, Manholes, Grease Traps...etc.
- ✘ Pressure Testing for Water Supply Pipes
- ✘ Installation of Sprinkler Pipes, Zone Control Valve, Wet Riser Pipes, Sprinkler Heads,
- ✘ Breeching Inlets, Fire Extinguisher, Fire Hose reel Cabinets, PRVs, Isolation Valve...etc.
- ✘ Installation of Landing Valves & Fire Hose Reels
- ✘ Installation of Suppression System (Clean Agent System, Deluge System, Pre - action System... etc.)
- ✘ Installation of Modules and Interfacing with Third party System.



## HEAVY FABRICATION REPAIR & WELDING:

- ✘ Chlorine Storage Tanks
- ✘ Primary & Secondary Chlorine Cooler
- ✘ Anolyte & Catholyte Tank
- ✘ Ion Exchange Columns
- ✘ Anthracite Filters
- ✘ Brine Polishing Filter
- ✘ Dechlorination Tower
- ✘ Chlorine Destruction Tank
- ✘ Columns & Towers
- ✘ Pressure Vessels
- ✘ Reactors
- ✘ Heat Exchangers
- ✘ Tanks (API Tank, Conical Roof, Rectangular Tanks)
- ✘ Hydrogen Gas Cooler Oxidizer
- ✘ Extractor
- ✘ Hydrogenation Reactor
- ✘ Purification Columns
- ✘ Solvent Recovery Unit
- ✘ Distillation Columns
- ✘ Evaporator
- ✘ Hydrogen Buffer Vessel
- ✘ Primary & Secondary Filters
- ✘ Primary Gas Cooler
- ✘ Air Pre Heater
- ✘ Waste Heat Recovery Boiler

## MINING PLANT & EQUIPMENT REPAIR AND INSTALLATION SERVICES

- ✘ Run of Mine Crushing, Screening, Blending, Stackers & reclaimers
- ✘ Minerals Conveying Systems including Overland Conveyors
- ✘ Ball Mills, Sag Mills, Roller Presses and Vertical Mills
- ✘ Drying, Calcining, Roasting and Smelting Systems
- ✘ Storages – Concrete Silos, Steel Bins, Covered Storages (A-Frame and Domes)
- ✘ Lime Handling and Milk of Lime Plants
- ✘ Dust Collection and Dust Suppression Systems
- ✘ Compressed Air Systems
- ✘ Thickener and Clarifying Tanks
- ✘ Medium Voltage Power Distribution
- ✘ Metal detection, belt alignment, plant process control troubleshooting and optimization.
- ✘ Material handling systems, overhead cranes, sand screws, grasshoppers
- ✘ Mineral washing plants: scrubbers, de-watering screens, flocculant dosing, filter press.
- ✘ Underground and Open Pit Mining
- ✘ Hydrometallurgy: Leaching, Heap Leaching, Solvent Extraction



Transforming ideas to life  
**Synergific**  
SOLUTIONS

**Service | Excellence | Quality**

**Masaya Al Zuhoor Trading Co. LLC**

7002 Al-Ahlam Center, Jeddah 23216 - 2622, Saudi Arabia

Mob: +966 55 042 1848 | +966 54 120 7879 | +966 59 385 0222

Tel: +966 12 655 1099 | CR: 4030248638

## LIST OF PROJECTS

**C: Civil, E: Electrical, J: Instrument, M: Mechanical, V: Rotary, EMT: Engineering Management  
P: Piping, R: Process, Y: Package, All: All Disciplines**

Project	End User	Project Location	Scope
Replacement of Existing 1,2,3 & 4 Utility Demine Plant AOV's	SHARQ-SABIC	Jubail	ILD Design on MicroStation
Jubail SWRO Desalination Plant Phase-2	SWCC	Jubail	Foundation and BBS
JUC Recreation Facilities_ibMS PKG# 097-C76R	Honeywell	Dammam	Design & Interface on AutoCAD
BMS system Riyadh Airport	Honeywell	Riyadh	Design & Interface on AutoCAD
BMS system Riyadh Airport	Honeywell	Riyadh	Design & Interface on AutoCAD
Detail Design of FDP-1 offshore & Onshore Immediate and short-term safety recommendation	KJO	Khafji	As built for fire water pipeline
Jubail Sea Water Intake	Jubai	Jubail	Foundation and BBS
Air Separator Plant drawings	SATROP	Jubail	As-built drawing on SmartPlant P&ID
Master Plan Margin Growth	SASREF	Jubail	Isometric drawing on SmartPlant Spoolgen
Upgrade Corrosion Inhibitor system at south NGL-1	Aramco	Abqaiq Plant	Model Generated in SmartPlant 3D
Link Bridge Design For Storage Tank	Chemical Specialist PTE. LTD	Singapore	Civil & Structural Design on Staad Pro, AutoCAD & Micro Station
Structural design for skid	Saffron B Project	SABIC Singapore	Civil & Structural Design on Staad Pro

Project	End User	Project Location	Scope
Structural Design for Heat Exchanger Support	Chemical Specialist PTE. LTD	Singapore	Civil & Structural Design on Staad Pro
Structural Design and Vibration analysis of AirFin Cooler	Chemical Specialist PTE. LTD	Singapore	Civil & Structural Design on Staad Pro
Structural and dynamic analysis of pipe handler	SKP engineering Pvt. Ltd	Delhi	Civil & Structural Design on Staad Pro
Vapour Recovery Unit for Aramco Plant	ARAMCO	DHAHRAN, RIAYDH, JEDDAH, QASSIM	As-built drawing on SmartPlant P&ID for all discipline
Passive Network System	Al Shaya Group	Riyadh	Construction
Low Current & IT Solutions	United Feed Manufacturing Co	Riyadh	Construction
CCTV, Network, Telephone & Digital Signage	Jeddah National Hospital Gulail	Jeddah	Construction
Low Current & Network Infrastructure (Dakkar Rally, Saudi Cup)	Tarfat Al Ebdaa	Riyadh	Construction
Low Current & IT Solutions	Mahmood Saeed Glass Industry	Jeddah	Construction
Network Passive Works (Riyadh Metro Project)	L & T Electrical & Automation	Riyadh	Construction

## VENDOR CODE

Client	Vendor Code
Saudi Aramco	10109616
Jubail Chemical Industries Company	104209

### Bank Account Information

Bank Name	Riyad Bank بنك الرياض	اسم البنك
Account Name	"M/S. Masaya Al Zuhoor Trading Company LLC" شركة مسايا الزهور للتجارة	اسم الحساب
Account Number	135-1668099-940	رقم الحساب
IBAN	SA2020000001351668099940	رقم الأيبان
SWIFT CODE	RIBLSARIXXX	
Branch Name	Al Baghdadeyah Branch	اسم الفرع
	Jeddah, Kingdom of Saudi Arabia	



Issuance Date: 10.13.2022

CCC Reference Number: 06-01-101322-N



## Cybersecurity Compliance Certificate

This is to confirm that

### **MASAYA AL ZUHOOR TRADING COMPANY LLC**

CR: 4030248638

2723 Al Muminah Bldg, Jeddah 23216 - 7041, Saudi Arabia.

was subject to an assessment by Defense Cyber Security to evaluate its compliance with Saudi Aramco Third Party Cybersecurity Standard (SACS-002). Based on the assessment carried out between 03-Oct-22 and 13-Oct-22, MASAYA AL ZUHOOR TRADING COMPANY LLC was found to be compliant with the Standard.

For the classification of: General Requirements, Type: CCC

This certificate is valid for a period of two years from the date of issuance.

#### Disclaimer:

This certificate is provided based on the information provided by MASAYA AL ZUHOOR TRADING COMPANY LLC that indicates their cybersecurity posture at the time of the assessment. Defense Cyber Security has not evaluated the adequacy or appropriateness of the Standard compiled by Saudi Aramco. Defense Cyber Security evaluation was limited to assessment against Saudi Aramco Third Party Cybersecurity Standard (SACS-002) and should not be relied upon as an assurance beyond the areas covered by this Standard. Defense Cyber Security shall not be liable for any loss, damages, costs or expenses directly or indirectly incurred by any third party, who may rely upon this certificate for whatsoever reason. This certificate is only for the purpose of meeting the requirements of Saudi Aramco and should not be published on any website or relied upon by anyone other than Saudi Aramco.





شركة مسايا الزهور للتجارة



السجل التجاري: 4030248638

## رمزك التجاري QR Code

من خلاله يمكنك التحقق المباشر من المعلومات:

- السجل التجاري
- رخصة البلدية
- شهادة السعودة
- برنامج نطاقات
- شهادة الزكاة
- الغرفة التجارية

٧٠١٢١٦٢٣٣٠

الرقم الموحد : ٤٠٣٠٢٤٨٦٣٨

رقم المنشأة : ٤٠٣٠٢٤٨٦٣٨

التاريخ : ١٤٣٤/٠٧/٢٢ هـ

# شهادة تسجيل الشركة Company Registration Certificate

وزارة التجارة  
Ministry of Commerce



الاسم التجاري للشركة : شركة مسابا الزهور للتجارة

نوعها : ذات مسؤولية محدودة مختلطة

جنسيتها : سعودي

مدة الشركة : تبدأ من : ١٤٤٣/٠٨/٠٨ هـ وتنتهي في :

مركزها الرئيسي : ٠٠٠٠ ، ٠٠٠٠

هاتف : ٦٧٨١٧٥١

الرمز البريدي : ٢٣٢١٦

ص. ب :

النشاط : للاطلاع على بيانات الأنشطة الرجاء مسح الرمز التجاري

رأس المال : ٤٥,٠٠٠ ريال سعودي

المديرون : 1 عابد سليمان مبروك المولد

2

3

4

5

6

7

8

9

10

11

12

13

14

15

16

سلطات المدير/المديرون : حسب ما نص عليه عقد الشركة

يشهد مكتب السجل التجاري بمدينة جدة

بأنه تم تسجيل الشركة المذكورة أعلاه بمدينة جدة

١٤٤٥/٠٨/٠٨ هـ

٤٢٨٨٢٣١

١٤٤٤/٠٩/١٣ هـ

وتاريخ :





## السادة/ شركة مسايا الزهور للتجارة

نهنكم بدخول عالم الأعمال التجارية وإصدار سجلكم التجاري، ونتطلع أن يساهم هذا السجل في تحقيق تطعاتكم، وأن يكتب الله لكم التوفيق والنجاح في عملكم التجاري وأن تكون شريكاً في تعزيز اقتصاد المملكة العربية السعودية.

يسرنا إبلاغكم بأن رقم منشآتكم الموحد هو ٧.١٢١٦٣٣. وقد تم ربطه بالخدمات الحكومية التي ستحتاجها مستقبلاً، وهي على النحو التالي:

الرقم:	رقم سجلكم التجاري للمنشأة	 <input checked="" type="checkbox"/>
٤.٣.٢٤٨٦٣٨		وزارة التجارة Ministry of Commerce
١٧٩٧.٨	رقم منشآتكم لدى وزارة الموارد البشرية والتنمية الاجتماعية	 <input checked="" type="checkbox"/>
١٥٥٩٦٨٣٧	تم تسجيل منشآتكم مجاناً لمدة سنة في خدمة واصل التجاري	 <input checked="" type="checkbox"/>
٣.٠٢٩١٨٧٣٦	رقم منشآتكم لدى هيئة الزكاة والضريبة والجمارك	 <input checked="" type="checkbox"/>
٥.٧٦٤٦.٤٢	رقم منشآتكم لدى المؤسسة العامة للتأمينات الاجتماعية	 <input checked="" type="checkbox"/>
١٨٧١٩١	رقم منشآتكم لدى الغرفة التجارية.	 <input checked="" type="checkbox"/>
٣٩.٩٦٤٤٨٤٩	رقم رخصة "بلدية" فورية (في حال اختياركم)	 <input checked="" type="checkbox"/>



يُتيح تطبيق "نوافذ منشآت" العديد من الخدمات الممكنة لك في عالم الأعمال و منها الحصول على الإرشاد و الاستشارات ، تطبيق "نوافذ منشآت" بوابة دخولك إلى عالم الأعمال، <https://www.monshaat.gov.sa/nawafth>

منشآت  
monsha'at  
Saudi Chamber of Commerce



### ويمكنك فتح حساب بنكي دون الحاجة إلى أي أختام لمنشأتك

كما جمعنا لك كافة الانظمة واللوائح بلغة بسيطة في دليل التاجر لتمارس عملك التجاري بسهولة [mc.gov.sa/trader/guide](https://mc.gov.sa/trader/guide)



تاريخ الإصدار: 2022/06/13  
الرقم المميز: 3113166664



الهيئة العامة للزكاة والدخل  
General Authority of Zakat & Tax



## شهادة تسجيل في ضريبة القيمة المضافة VAT Registration Certificate

تشهد الهيئة العامة للزكاة والدخل بأن المكلف أدناه مسجل في ضريبة القيمة المضافة بتاريخ 2022/06/13

Hereby, The General Authority of Zakat & Tax (GAZT) certifies that the taxpayer below is VAT registered on 13/06/2022

اسم المكلف:	شركة مسايا الزهور للتجارة	Taxpayer Name:
رقم التسجيل الضريبي:	311316666400003	VAT Registration Number:
تاريخ نفاذ التسجيل:	2022/07/01	Effective Registration Date:
عنوان المكلف:	جدة، 23216، Abu Dajannah، Sharfayah	Taxpayer Address:



كمكلف مسجل في ضريبة القيمة المضافة، لا يجوز لك تحصيل ضريبة القيمة المضافة من عملائك قبل تاريخ نفاذ التسجيل بالضريبة. في حال تبين غير ذلك، ستقوم الهيئة العامة للزكاة والدخل بتنفيذ الغرامات المستحقة

هذه الوثيقة مرسله من النظام الآلي ولا تحتاج إلى توقيع  
- الهيئة العامة للزكاة والدخل -



تاريخ الإصدار: 2022/06/13  
الرقم المميز: 3113166664



الهيئة العامة للزكاة والدخل  
General Authority of Zakat & Tax



اسم المكلف:	شركة مسايا الزهور للتجارة	Taxpayer Name:
رقم السجل/الرخصة/العقد:	4030248638	CR / License / Contract No.:
الفترة الضريبية:	ربع سنوي-Quarterly	Tax Period:
تاريخ استحقاق أول إقرار ضريبي:	2022/10/31	First Filing due date:



كمكلف مسجل في ضريبة القيمة المضافة، لا يجوز لك تحصيل ضريبة القيمة المضافة من عملائك قبل تاريخ نفاذ التسجيل بالضريبة. في حال تبين غير ذلك، ستقوم الهيئة العامة للزكاة والدخل بتنفيذ الغرامات المستحقة

هذه الوثيقة مرسله من النظام الآلي ولا تحتاج إلى توقيع  
- الهيئة العامة للزكاة والدخل -



رقم الشهادة: ١٠٣٢٢٠٠٠٢٣٠٦٣٦٩  
التاريخ: ١٤٤٣/١١/١٣ هـ  
الرقم المميز: ٣١١٣١٦٦٦٦٤



الهيئة العامة للزكاة والدخل  
General Authority of Zakat & Tax

المملكة العربية السعودية  
الهيئة العامة للزكاة والدخل  
General Authority of Zakat & Tax

# شهادة

CERTIFICATE

تسجيل

تشهد الهيئة العامة للزكاة والدخل بأن المكلف / شركة مسايا الزهور للتجارة

شركة رقم ٧٠١٢١٦٢٣٣٠ وسجل تجاري / رخصة / عقد رقم ٤٠٣٠٢٤٨٦٣٨

مسجل لديها بالرقم المميز ٣١١٣١٦٦٦٦٤ بتاريخ ١٤٤٣/٠٨/١٢ هـ.

وقد منح هذه الشهادة لتمكينه من إنهاء جميع معاملاته ماعدا صرف مستحقاته النهائية  
عن العقود .

يسري مفعول هذه الشهادة حتى تاريخ ١٤٤٥/٠٣/٢٧ هـ الموافق ٢٠٢٣/١٠/١٢ م .

(السابع و العشرون من ربيع الأول ألف و أربعمائة و خمسة و أربعون هجري)



الختم الرسمي

هذه الوثيقة مستخرجة من النظام الآلي ولا تحتاج إلى توقيع

لا يعتد بهذه الشهادة إلا بعد التحقق من موقع الهيئة [www.gazt.gov.sa](http://www.gazt.gov.sa)

التاريخ ١٤٤٤/١١/١٥  
الموافق ٠٤/٠٦/٢٠٢٣  
رمز الشهادة ٥٥٠٠٩٤٠٤



## شهادة

إسم المنشأة : شركة مسايا الزهور للتجارة

جدة

السعودية

رقم الإشتراك : ٥٠٧٦٤٦٠٤٢

رقم السجل التجاري: ٤٠٣٠٢٤٨٦٣٨

مصدره :

كتابة  
ثمانية مشتركين  
واحد و ثلاثون مشتركا  
تسعة و ثلاثون مشتركا

رقما  
٨  
٣١  
٣٩

عدد المشتركين السعوديين  
عدد المشتركين غير السعوديين  
المجموع

تشهد المؤسسة العامة للتأمينات الإجتماعية بأن المنشأة المذكورة أعلاه قد أوفت بالتزاماتها تجاه المؤسسة وفق البيانات المقدمة منها حتى تاريخ إصدار هذه الشهادة ، والتي تم منحها لتقدمها لأية جهة تطلبها ، وهي صالحة لجميع الأغراض التي نص عليها نظام التأمينات الإجتماعية في المادة (١٩/٦) منه.

هذه الشهادة سارية المفعول حتى ١٤٤٤/١٢/١٥ هـ.

يلزم التحقق من صحة وصلاحيه الشهادة عبر زيارة الرابط  
أناه في الموقع الإلكتروني للمؤسسة العامة للتأمينات الإجتماعية  
أو عن طريق استخدام  
الرمز المعرف التالي :



[www.gosi.gov.sa/vc](http://www.gosi.gov.sa/vc)

( الشهادة معتمدة من صاحب الصلاحيه ولا تحتاج إلى توقيع أو ختم )

ننهادت

[www.gosi.gov.sa](http://www.gosi.gov.sa)  
800 1243344



تعد هذه الشهادة من الوثائق الإلكترونية الحكومية الرسمية ، ويحظر قطعيا تقليدها أو إدخال أي تعديلات عليها سواء بالإضافة أو الحذف أو التغيير في بياناتها أو غير ذلك من أنواع التعديل ، وتعد الشهادة لاغية إذا شابهها شيء من ذلك ، كما تعرض صاحبها للملاحقة النظامية أمام الجهات المختصة بالإضافة إلى مايفرضه نظام التأمينات الاجتماعية من عقوبات ، ولايجوز تداول الشهادة إلا في الأغراض التي أصدرت لأجلها وفقا لأحكام نظام التأمينات الاجتماعية ، والمؤسسة العامة للتأمينات الاجتماعية غير مسؤولة عن أي آثار أخرى مترتبة قبل الغير عن الشهادة وغير مسؤولة عن أي عملية تزوير أو تعديل تتم على البيانات الواردة فيها .

  
التأمينات الإلكترونية  
بإمكانك من مكانك

## Saudization certificate

Certificate number: 210712-66507466

Issuance date: 2023-01-23

Expiry date: 2023-09-02

Renewal date: 2023-06-04

Establishment number: 9-2100694

Establishment name: شركة مسايا الزهور للتجارة

Certificate status: Active

CR number: 4030248638

National unified number: 7012162330



The Ministry of Human Resources and Social Development certifies that the establishment has achieved the required nationalization rates

They were granted this certificate as requested

**The certificate is approved by the authorized person and does not need a signature or stamp**



شهادة عضوية  
الدرجة الثالثة  
Membership Certificate  
Third Class



نشهد بأن  
شركة مسايا الزهور للتجارة  
Masaya Al Zohour Trading Company  
مسجل لدينا  
Is a registered member

Unified Number	7012162330	رقم المنشأة
Date of Subscription	14/08/1434 - 2013/06/23	تاريخ الاشتراك
Expiry Date	08/08/1445 - 2024/02/18	تاريخ الانتهاء
Commercial Record/ License	4030248638	السجل التجاري / الرخصة
Release Date	22/07/1434 - 2013/06/01	تاريخ الاصدار
Expiry Date	08/08/1445 - 2024/02/18	تاريخ الانتهاء

التوقيع Signature



الختم Stamp

شهادة إلكترونية ، يمكنك مسح الرمز للتأكد من صحة الشهادة An electronic certificate, Scan the code to check the certificate's validity



# *Certificate of Registration*

This is to certify that

## **MASAYA AL ZUHOOR TRADING EST. (SYNERGIFIC SOLUTIONS)**

**2723 Abu Dajanah Street Ash Sharafiyah Dist. Jeddah 23216-7041,  
Kingdom of Saudi Arabia.**

has been independently assessed by QRO  
and is compliant with the requirement of:

### **ISO 9001:2015**

## **Quality Management System**

For the following scope of activities:

**Systems Integrator Of High-End Electrical Low Current System, Information Technology,  
Network Solutions & Digital Signage System Solutions.**

Date of Certification: 8th November 2021

2<sup>nd</sup> Surveillance Audit Due: 7th November 2023

1<sup>st</sup> Surveillance Audit Due: 7th November 2022

Certificate Expiry: 7th November 2024

**Certificate Number: 305021110829Q**



  
Head of Certification

Validity of this certificate is subject to annual surveillance audits to be done successfully on or before 365 days from date of the audit.  
(In case surveillance audit is not allowed to be conducted; this certificate shall be suspended / withdrawn).

**The Validity of this certificate can be verified at [www.qrocert.org](http://www.qrocert.org)**

This certificate of registration remains the property of QRO Certification LLP, and shall be returned immediately upon request.

**India Office : QRO Certification LLP**

142, IInd Floor, Avtar Enclave, Near Paschim Vihar West Metro Station, Delhi-110063, (INDIA)

Website : [www.qrocert.org](http://www.qrocert.org), E-mail : [info@qrocert.org](mailto:info@qrocert.org)

# CERTIFICATE of APPRECIATION

THIS CERTIFICATE IS AWARDED TO

***Synergific Solutions***

FOR DEDICATION OF YOUR TEAMWORK STOOD BY THE EXPECTATIONS AND HAVE A MEANINGFUL CONTRIBUTION TO THE COMPANY AND HELPED US TO SUBMIT THE DESIGN PACKAGE ON TIME TO CLIENT "SHARQ-SABIC

***ILD design "Replacement of Existing 1,2,3, & 4 utility demine plant AOV's***



Jignesh Thanki, Project Engineer

شروق  
sharq

**MARAFIQ DESALINATION PROJECT**

**CERTIFICATE *of* RECOGNITION**

Is hereby presented to

***Synergific Solutions***

FOR SUPPORT & DEDICATION WORK OF Mr. Faeq Ahmed & HIS TEAM DURING CONSTRUCTION FOR DESIGN AND VERIFICATION OF CIVIL FOUNDATION (Sea Water Intake Building & Water Treatment Building) ADDITIONAL TO THAT ACCURATE BBS CALCULATION WHICH HELPED US TO DELIVERED THE QUALITY OF WORK TO CLIENT "FISHER" & "RAWAFID" END USER "MARAFIQ"

A handwritten signature in blue ink, appearing to read "Boosi Rajendra".

**Boosi Rajendra**

Projects Director at SAS Intl co

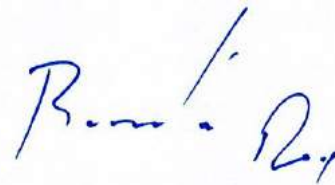
JUBAIL SWCC-II PLANT

# CERTIFICATE *of* RECOGNITION

Is hereby presented to

***Synergific Solutions***

FOR SUPPORT & DEDICATION WORK OF Mr. Faeq Ahmed & HIS TEAM DURING CONSTRUCTION FOR DESIGN AND VERIFICATION OF CIVIL FOUNDATION (Sea Water Intake Building & Others Associated Structure Building) ADDITIONAL TO THAT ACCURATE BBS CALCULATION WHICH HELPED US TO DELIVERED THE QUALITY OF WORK TO CLIENT "FISHER" & "SEPCOII" END USER "MARAFIQ"

A handwritten signature in blue ink, appearing to read 'Boosi Rajendra'.

**Boosi Rajendra**  
Projects Director at SAS Intl co

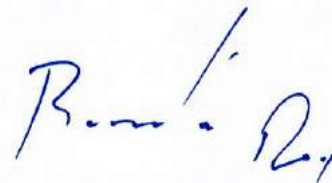
**KHAFJI SWRO PLANT**

**CERTIFICATE *of* RECOGNITION**

Is hereby presented to

***Synergific Solutions***

FOR SUPPORT & DEDICATION WORK OF Mr. Faeq Ahmed & HIS TEAM DURING CONSTRUCTION FOR DESIGN AND VERIFICATION OF CIVIL FOUNDATION (Sea Water Intake Building & Others Associated Structure Building) ADDITIONAL TO THAT ACCURATE BBS CALCULATION WHICH HELPED US TO DELIVERED THE QUALITY OF WORK TO CLIENT "RAWAFID" END USER "SWCC"

A handwritten signature in blue ink, appearing to read 'Boosi Rajendra'.

**Boosi Rajendra**  
Projects Director at SAS Intl co



BLINK EXPERIENCE

Date: Monday, 12 April, 2021

Synergific Solutions  
Masaya Al Zuhoor Est.  
Kingdom of Saudi Arabia

Subject: Letter of Appreciation for timely completion of Darkar Race 21 & Formula-E 21

Dear Mr. Sayed Moinuddin,

It gives me great pleasure to write this letter to congratulate your team members for the wonderful work they have done during both events, which has helped BLINK Experience complete the project well on-time.

We truly appreciate the contribution and dedication of your team has been worthy of special praise, given the satisfaction of our management.

Looking forward to working with you on future projects.

Sincerely,

Ghassan Wehbe  
HR Exe. Director

